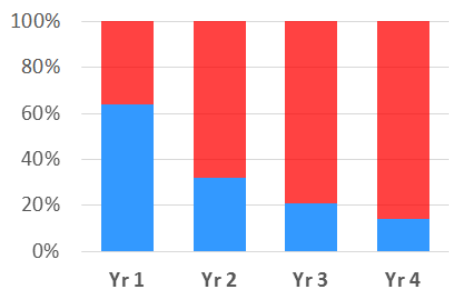


The single best thing you can do to help referees is to allow them to make their decisions!

While training and practice are important, there is no better way to develop players than to let them make and learn from decisions during a game. The game is its own best teacher, and the **same is true for referees**. You wouldn't train your players merely by watching game videos or sitting in a room and talking about the sport. Similarly, no amount of online modules, PowerPoint slides or hours in a classroom alone are sufficient to train a referee. Only by working games will a referee develop and improve.

Referee Attrition in WV



4 out of 5 referees quit within 3 years – they leave before they have a chance to learn!

Coaches may prefer an experienced referee on their matches, but if the referee for your match today decides to quit because of a bad experience in that game, then the only referee available for your next match will probably be even newer.

In your influential role, your players and their fans will model your example behavior. Please help to set and maintain a supportive tone.

WHAT IF I HAVE CONCERNS ABOUT A REFEREE?

If you have concerns about a referee, you should address them to your league's Referee Assignor or a member of your league's administration. Do not approach the referee immediately following the match.

**Know a young referee who is doing a good job?
Nominate her or him for the:**

WVSA Young Referee Academy

The link to the nomination form is available at:
www.wvsareferees.org/for-coaches

The WVSA Young Referee Academy is open to all young referees in West Virginia who seek to develop and improve. Participants will receive additional mentoring and development opportunities, such as clinics taught by U.S. Soccer National Referee Coaches. They may even be selected to represent West Virginia on a referee delegation to a US Youth Soccer regional event.

Additional Questions?

Contact:

Michael J. McCarthy
State Referee Administrator

sra-mike@wvsoccer.net

Or a member of the State Referee Committee:

www.wvsareferees.org/referee-program-contacts

INTERACTING WITH REFEREES

A Handout for Soccer Coaches

Welcome to the WV Soccer Association – or welcome back if you have served as a coach in the past. Your role is crucial to the development of the young athletes with whom you work and vital to the continued growth of the sport in our state.

Thank you for your service!

This handout provides information concerning how soccer referees are trained to interact with coaches as well as some thoughts for you to consider as you work with the referees assigned to your matches. Together we can strive to provide a safe, fair and fun experience for the youth players

Want to learn more about how soccer referees are trained to enforce the Laws of the Game?

www.wvsareferees.org/for-coaches

- Latest changes to the Laws of the Game
- What makes a tackle a foul? A yellow card? A red card?
- What are the directives about Offside?
- When is contact between the ball and the hand or arm considered a Handball?



STATE REFEREE PROGRAM



What if I disagree with a Referee's decision? Do I have a right to question a call?

Consider this metaphor: when driving on the interstate with a posted speed of 70mph, how many additional mph do you have a "right" to? We are all fortunate that most state troopers are tolerant, but we have no "right" to such leeway. Similarly, the Laws of the Game afford no one the "right" to dispute the referee -- not even a captain or coach.

Many referees will accept and respond briefly to sincere and polite questions, but please remember:

1. The referees need to maintain focus on the game and must minimize distractions
2. Referees are not obligated to tolerate objections or explain their decisions

How should I behave as a coach?

Law 1 requires that *"the coach and other occupants of the technical area [bench area] must behave in a responsible manner,"* and referees are empowered to take action when irresponsible behavior interferes with or undermines the ability to manage the game.

The referee has flexibility to decide what constitutes irresponsible behavior, but common examples include:

- Persistent questioning of decisions
- Offensive or insulting language or gestures
- Kicking or throwing items
- Refusing to remain near the bench or within the technical area

Referees address irresponsible behavior with the "ASK, TELL, DISMISS" approach

1. **Ask** the coach to behave responsibly, but if the irresponsible behavior continues, then:
2. **Tell** the coach that continued bad behavior will result in a dismissal, and finally, if the bad behavior does not stop:
3. **Dismiss** the coach from the field and its immediate surroundings

Referees are not obligated to follow every step of this process and may bypass one or more steps when dealing with egregious behavior.

Unless local league policy directs referees to use yellow or red cards during the process, the referee will ask, tell or dismiss without showing a card to the coach. It is therefore important for coaches to recognize and comply with the directions of the referee, who might use phrases such as these examples:

Examples of an "Ask":

- *"Coach, you've said your peace. We're moving on now."*
- *"Coach, I'm asking you to stop that behavior."*
- *"Coach, the referee saw it differently and is closer to the play than we are." (from an Assistant Referee)*

Examples of a "Tell":

- *"Coach, if you want to stay, you need to stop that behavior."*
- *"Coach, if that behavior does not stop, I will have no choice but to dismiss you."*
- *"Coach, is there anyone else available to coach your team should you be dismissed?"*
- *"Coach, if you continue, I will call the referee over here to dismiss you." (from an Assistant Referee)*

WHAT HAPPENS IF A COACH GETS DISMISSED?

We all hope it never happens, but should a situation at a match escalate to the point where the referee dismisses a coach, please understand the following:

1. A dismissal is not a negotiable situation. Law 5 gives that power solely to the referee, and it is not subject to veto -- neither by another referee nor by a league administrator. Coaches may appeal suspensions from subsequent matches (see #4, below), but if dismissed from a game, they must depart immediately.
2. The coach must leave the field and its immediate surroundings immediately (i.e., "out of sight and sound of the field"). It is not acceptable for the coach merely to sit or stand with the spectators for the remainder of the match.
3. The game will not resume until the coach has departed, and if the coach refuses to do so, the referee is directed to terminate the match and to file a report with the league as well as with the WV Soccer Association and with the State Referee Program.
4. In addition, a coach who is dismissed must serve a minimum suspension of one game from that team's next regularly scheduled match. League policies, as well as policies of the WV Soccer Association and the U.S. Soccer Federation concerning misconduct toward officials provide for appeals or the possibility of further sanctions.

For more information & links to the

WVSA Administrative Rule Book:

www.wvsareferees.org/for-coaches